

## EQUINE X-RAY SYSTEMS

### ATXEQ16 EQUINE PORTABLE X-RAY



- max output power 1.6kW
- max kiloVolt - 90kV
- max milliAmpere - 20mA
- max milli Ampere seconds - 100mAs
- Soft touch keypad for easy control.
- Short body and balanced weight distribution for ease of positioning.
- Innovation designed super light-weight (6.0kg), Very high frequency (100kHz) portable x-ray.
- High Performance Premium Series Portable X-ray system.
- Potential for high resolution imaging at lower dosages.
- Durable design with solid body.
- Dual Integrated Laser Pointer.

ATXEQ16 portable data sheet

[Read More](#)

**CODE** 2ATXHF16-1

**Categories:** [X-Ray Systems](#), [Equine X-ray Systems](#)



### EQUUS CT TABLE

<http://www.artecimaging.com/EquusCT.html>

EquusCT scanning table

Current Installations Supported by ATX

University of Queensland - Gatton

Sydney University - NSW

Murdoch University - WA

Adelaide University - Roseworthy

Khon Khan University - Thailand

Equus CT is a system for CT scanning of horses (camels, llamas, large cats, etc.) at veterinary teaching universities and private clinics. The EquusCT automatically synchronizes with the movement of the CT couch without any electrical or mechanical interfacing. The EquusCT operates with any CT, is easy to use, and provides the practitioner with

Tailored veterinary system and solutions including digital - CR - DR x-ray, other diagnostic equipment supply and service.

a breakthrough tool that enhances the diagnosis of a patient's condition.

The table moves manually and is capable of supporting a 2,100 lb (953 kg) horse. The floating carousel provides the ability to finely position the patient with the CT gantry for scanning. The carousel floats in a transverse, linear and circular motion. The carriage has a linear motion range of 36" (915 cm) for scanning.

[Read More](#)

**CODE** 2ARTECEquusCT

**Category:** [Equine X-ray Systems](#)



## ATX DR EQUINE SYSTEM - SMALL OR LARGE WIRELESS GADOX

Includes carry bag, and Surface pro computer.

High performance cassette sized DR panel - Wireless, Gadox



- High DQE - to achieve outstanding image quality at low dose
- Ultra-sensitive AED - eliminates generator integration
- Lowest dose
- Fast - full resolution image viewable in a few seconds
- Low maintenance - frequent re-calibration not required
- Battery for wireless option with 10 hours of standby time
- No external interface or power box

[Read More](#)

**CODE** 2ATX-DRGADOXW 14x17E

**Category:** [Equine X-ray Systems](#)



## ATX HF16 EQUINE PORTABLE X-RAY

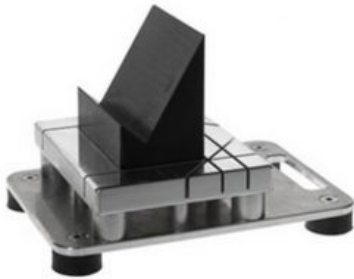
- max output power 1.6kW
- max kiloVolt - 90kV
- max milliAmpere - 30mA
- max milli Ampere seconds - 100mAs
- Soft touch keypad for easy control.
- Short body and balanced weight distribution for ease of positioning.
- Innovation designed super light-weight (6.8kg), High frequency portable x-ray.
- High Performance HF-Series Portable X-ray system.
- Potential for high resolution imaging at lower dosages.
- Durable design with solid body.
- Dual Integrated Laser Pointer.

[ATX HF portable data sheet](#)

[Read More](#)

**CODE** 2ATXHF16

**Categories:** [X-Ray Systems](#), [Equine X-ray Systems](#)



## PODOBLOCK.

[Read More](#)

**CODE** PPB01AL090

**Category:** [Equine X-ray Systems](#)

**Tag:** [Equine X-ray Aids](#)