

MARKERS



BEEKLEY ACCUGRID®302 5.65"

AccuGrid® Specimen Localizing Grid System 302

Ref: 302, (QTY: 10 / box)

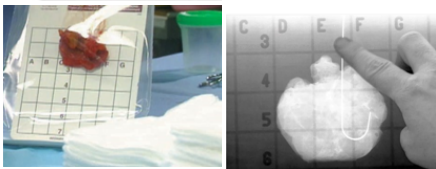
- 5.65" radiolucent grid inside a sealable surgical bag
- for the safe imaging, transport, and processing of surgical breast specimens
- expanded grid size for use with larger specimens

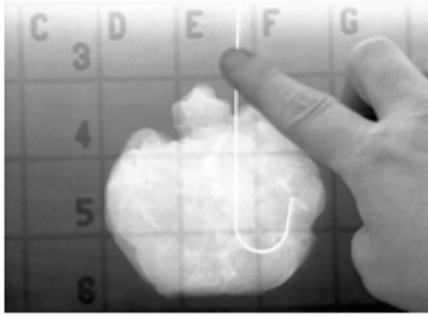
[Read More](#)

CODE C-BEEK302

Categories: [Markers](#), [Skin Markers](#)

Tag: [AccuGrid® Specimen Localizing Grid System](#)





BEEKLEY ACCUGRID®300

AccuGrid® Specimen Localizing Grid System 300

Ref: 300, (QTY: 12 / box)

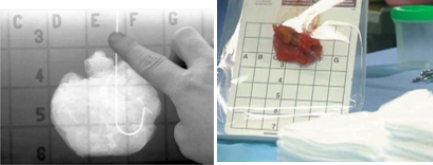
- *4.65" radiolucent grid inside a sealable surgical bag*
- *for the safe imaging, transport, and processing of surgical breast specimens*

[Read More](#)

CODE BEEK300

Category: [Markers](#)

Tag: [AccuGrid® Specimen Localizing Grid System](#)



Tailored veterinary system and solutions including digital - CR - DR x-ray, other diagnostic equipment supply and service.



BEEKLEY ACCUGRID®300 4.65"

AccuGrid® Specimen Localizing Grid System 300

Ref: 300, (QTY: 12 / box)

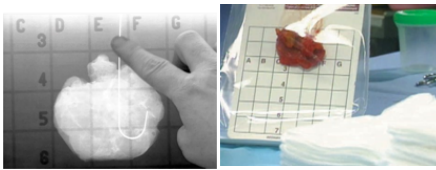
- *4.65" radiolucent grid inside a sealable surgical bag*
- *for the safe imaging, transport, and processing of surgical breast specimens*

[Read More](#)

CODE C-BEEK300

Category: [Skin Markers](#)

Tag: [AccuGrid® Specimen Localizing Grid System](#)



SKIN MARKERS



BEEKLEY ACCUGRID®302 5.65"

AccuGrid® Specimen Localizing Grid System 302

Ref: 302, (QTY: 10 / box)

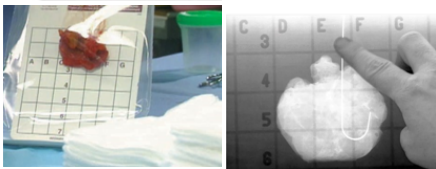
- 5.65" radiolucent grid inside a sealable surgical bag
- for the safe imaging, transport, and processing of surgical breast specimens
- expanded grid size for use with larger specimens

[Read More](#)

CODE C-BEEK302

Categories: [Markers](#), [Skin Markers](#)

Tag: [AccuGrid® Specimen Localizing Grid System](#)



Tailored veterinary system and solutions including digital - CR - DR x-ray, other diagnostic equipment supply and service.



BEEKLEY ACCUGRID®300 4.65"

AccuGrid® Specimen Localizing Grid System 300

Ref: 300, (QTY: 12 / box)

- *4.65" radiolucent grid inside a sealable surgical bag*
- *for the safe imaging, transport, and processing of surgical breast specimens*

[Read More](#)

CODE C-BEEK300

Category: [Skin Markers](#)

Tag: [AccuGrid® Specimen Localizing Grid System](#)

