

# MARKERS

## BEEKLEY CT-SPOT® 123

**CT-SPOT® 123**

**Ref: 123, (QTY 50/box)**

*Ideal for marking 3-point set-ups, isocenters, and field borders, these unique markers image brightly during simulation for visibility through multiple slices.*

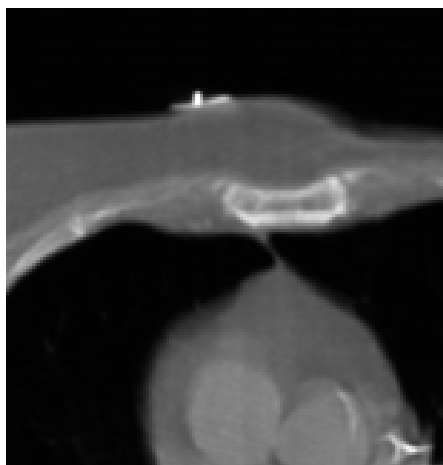
- 2.0cm x 2.0cm non-metallic crosshair
- for 3-point set-ups, isocenters, and field borders

[Read More](#)

**CODE** BEEK123

**Category:** [Markers](#)

**Tags:** [CT Simulation Skin Markers](#), [Grids and Markers](#)



## BEEKLEY CT-SPOT® 120

*Ideal for marking 3-point set-ups and isocenters, these unique markers image brightly during simulation without streaking or artifact.*

**BEEKLEY CT-SPOT® 120, Ref: 120 (QTY: 85/box)**

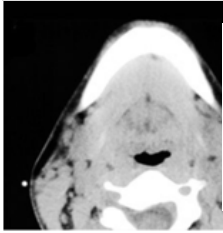
- 4.0mm non-metallic pellet
- for 3-point set-ups and isocenters

[Read More](#)

**CODE** C-BEEK120

**Categories:** [Markers](#), [Skin Markers](#)

**Tag:** [CT Simulation Skin Markers](#)



## BEEKLEY CT-SPOT® 119

**BEEKLEY CT-SPOT® 119**

**Ref: 119, (QTY: 85/box)**

*Ideal for marking 3-point set-ups and isocenters, these unique markers image brightly during simulation without streaking or artifact.*

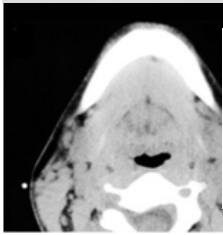
- 2.3mm non-metallic pellet
- for 3-points set-ups and isocenters

[Read More](#)

**CODE** C-BEEK119

**Categories:** [Markers](#), [Skin Markers](#)

**Tags:** [CT Simulation Skin Markers](#), [Grids and Markers](#)





## BEEKLEY CT-SPOT® 118

CT-SPOT® 118

**Ref: 118, (QTY: 320cm cut to measure  
roll/box)**

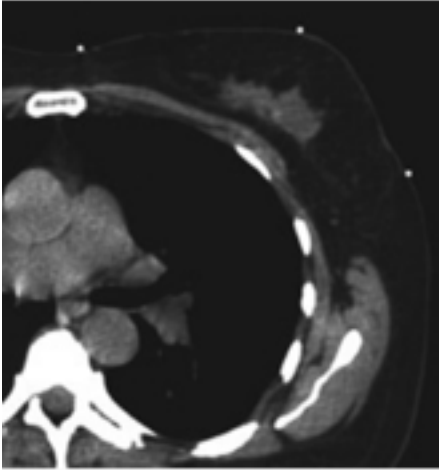
- 2.0mm diameter non-metallic line
- for marking scars and field borders

[Read More](#)

**CODE** BEEK118

**Category:** [Markers](#)

**Tag:** [CT Simulation Skin Markers](#)





## SKIN MARKERS

### BEEKLEY CT-SPOT® 120

*Ideal for marking 3-point set-ups and isocenters, these unique markers image brightly during simulation without streaking or artifact.*

**BEEKLEY CT-SPOT® 120, Ref: 120 (QTY: 85/box)**

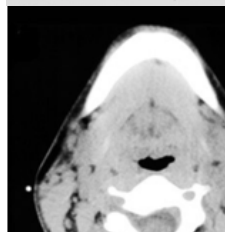
- 4.0mm non-metallic pellet
- for 3-point set-ups and isocenters

[Read More](#)

**CODE** C-BEEK120

**Categories:** [Markers](#), [Skin Markers](#)

**Tag:** [CT Simulation Skin Markers](#)





## BEEKLEY CT-SPOT® 119

**BEEKLEY CT-SPOT® 119**

**Ref: 119, (QTY: 85/box)**

*Ideal for marking 3-point set-ups and isocenters, these unique markers image brightly during simulation without streaking or artifact.*

- 2.3mm non-metallic pellet
- for 3-points set-ups and isocenters

[Read More](#)

**CODE** C-BEEK119

**Categories:** [Markers](#), [Skin Markers](#)

**Tags:** [CT Simulation Skin Markers](#), [Grids and Markers](#)

